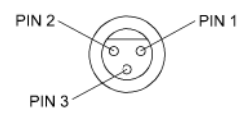


CHANGES FROM BASE PRODUCT SS-4100W-ECU (5258) TO SS-4100WT-ECU (5852)

Revision Notes.				
R1 -				
APA: -	Drawn: -	Checked: -	Approved: -	Date: -

CHANGE:  
 1. SWITCHED GROUND OUTPUT TRIGGER ADDED TO ECU  
 2. SS-4100W-ECU PD-LBL CHANGED TO SS-4100WT-ECU PD-LBL  
 OPERATION:  
 GROUND OUTPUT ON BLACK WIRE OPERATES DURING DETECTION (MAX CURRENT 250mA)

**VIEW A**



**3 PIN MALE MATING FACE**

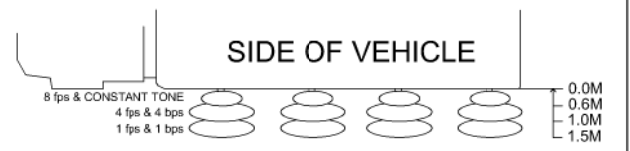
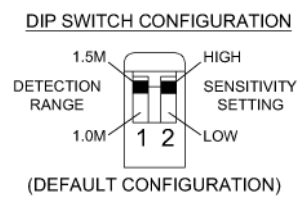
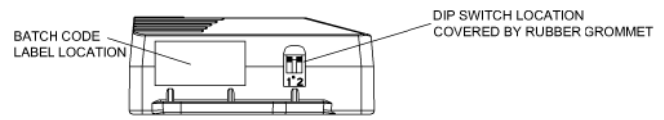
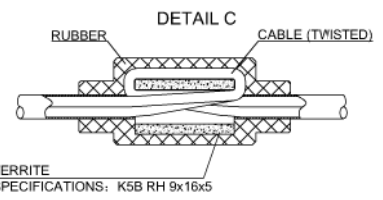
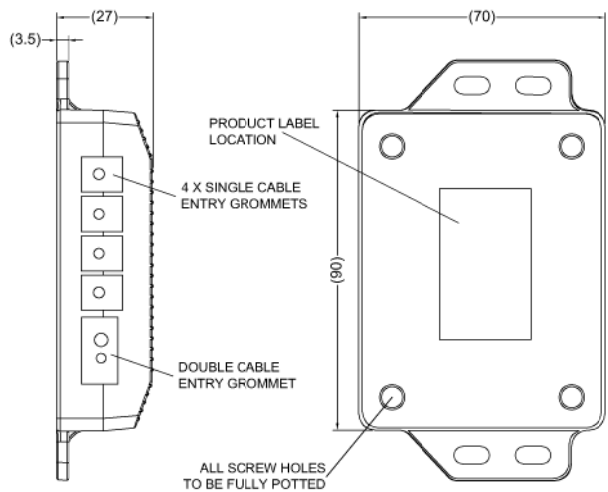
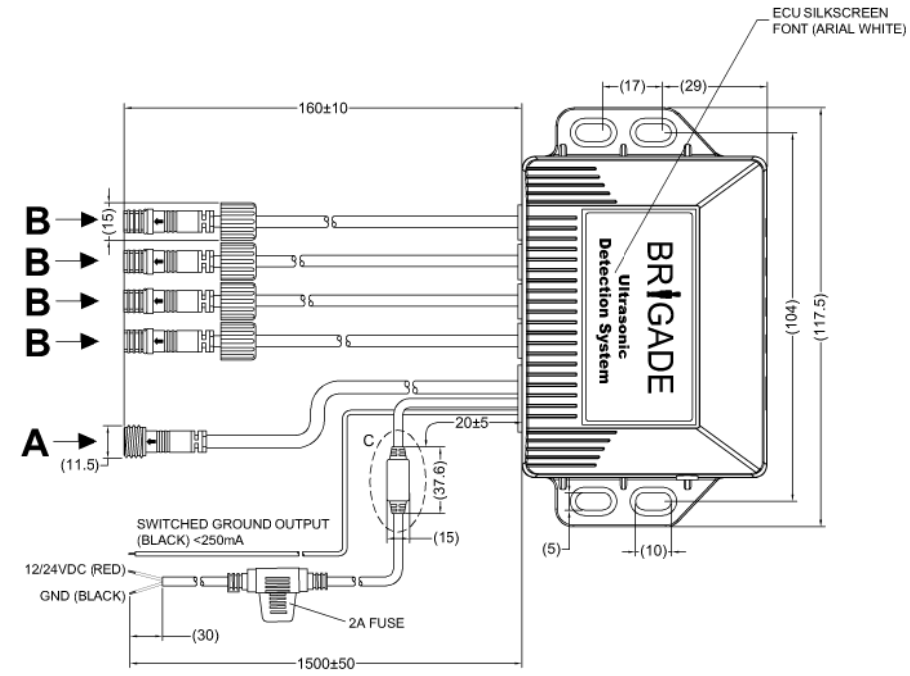
PIN #	WIRE COLOJR	DESCRIPTION
1	BLACK	GND
2	RED	BUZZER POWER
3	WHITE	BUZZER SIGNAL

**VIEW B**



**2 PIN FEMALE MATING FACE**

PIN #	WIRE COLOJR	DESCRIPTION
1	BLACK	GND
2	RED	SENSOR SIGNAL



- NOTES:**
- SOFTWARE VERSION: side11hex.
  - ECU HOUSING IS ABS PLASTIC.
  - ECU FINISH IS TEXTURED BLACK PLASTIC, SILKSCREEN MUST BE WHITE.
  - FOR PACKAGING & LABELING DETAIL REFER TO THE LATEST REVISION OF THE MASTER BOM.
  - ON START UP THE ECU WILL BEEP ONCE FOR ONE FAULTY SENSOR, TWICE FOR TWO FAULTY SENSORS ETC.
  - THE DIP SWITCH SETTING APERTURE MUST BE PROTECTED BY A GROMMET WITH TOP SECTION FREED TO GAIN ACCESS.
  - ALL AUDIBLE WARNINGS ARE MEASURED IN BEEPS PER SECOND (bps).
  - ALL VISUAL WARNINGS ARE RED AND ARE MEASURED IN FLASHES PER SECOND (fps).

Assembly PI Approval A. YAO	Approved by B. CHILDS	Checked by J. STUART	Drawn by A. FOSTER
Angle of Projection	Units mm	Scale N/A	Released 04/07/19
Third Angle	Status RELEASED	SS-4100WT-ECU	
	Part No 5852	BE-004090-00-19	

**PROPRIETARY NOTICE**  
 THIS DESIGN AND TECHNICAL INFORMATION APPEARING ON THIS DRAWING IS THE PROPERTY OF BRIGADE ELECTRONICS, AND IS DISCLOSED IN CONFIDENCE. IT IS NOT TO BE COPIED, REPRODUCED, REVEALED TO OR EXPROPRIATED BY OTHERS, EITHER IN WHOLE OR IN PART WITHOUT THE EXPRESS WRITTEN CONSENT OF BRIGADE ELECTRONICS.

**BRIGADE®**